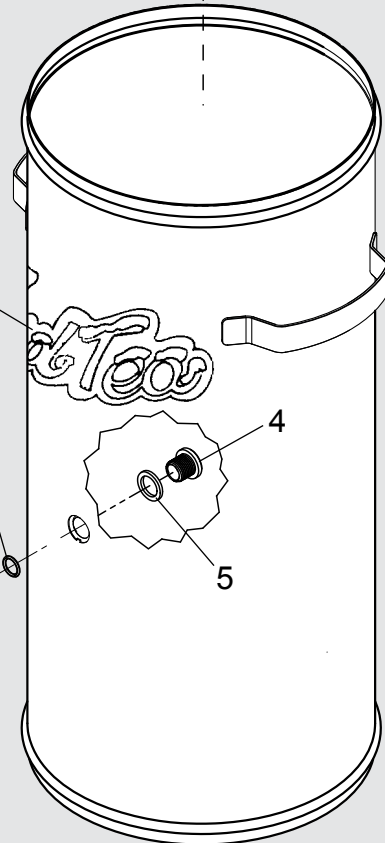
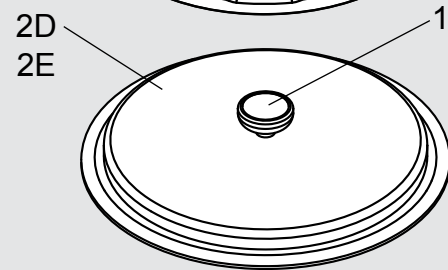
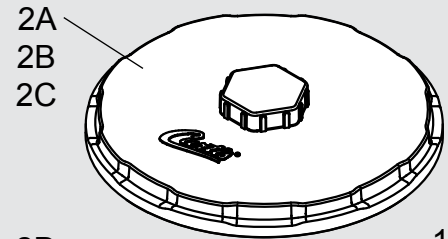




# TC Series Iced Tea Dispensers

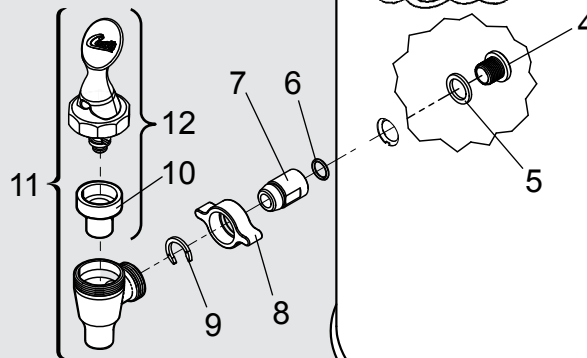
## PARTS LIST

Index	Part	
Nº	Number	Description
1	WC-3202 <sup>1</sup>	KNOB, LID (USE ON OLDER UNITS)
2A	WC-56023	LID, STACKABLE TC-2H/3H/5H
2B	WC-56042 <sup>2</sup>	LID, STACKABLE TCS5
2C	WC-5635 <sup>3</sup>	LID, TC-3.5 BREW THROUGH
2D	WC-5602 <sup>4</sup>	LID W/KNOB TC-10
2E	WC-5612 <sup>5</sup>	LID 10-5/8 W/KNOB TC-5HS (OLDER UNIT)
3	WC-3800	LABEL, ICED TEA CURTIS
4	WC-3006	ADAPTER, TC PLUG SST.
5	WC-4306-102	WASHER, .875" O.D X .625ID X .093 THK TEFLON
6	WC-4304	O-RING, .468 ID x .624OD X .07 8CS RED SIL. 70 SHORE
7	WC-3005	ADAPTER, TC UNION SS
8	WC-1905	NUT, WING PLASTIC 1-1/32-14UNF (TC-2,3,5,10)
9	WC-1906	"C" RING .917 X .760 X .090 TT-3 TC'S
10	WC-1805	SEAT CUP, "S" FAU. USE ON WC-1800/B/LB/D/DL/L/WC-1803
11	WC-1803	FAUCET, "SPB" SERIES BLACK PLATIC 1-1/32-14 UNS
12	WC-3707	KIT, FAUCET SPB SERIES USE ON WC-1803



### NOTES:

- <sup>1</sup>Replacement knob for older units
- <sup>2</sup>Used on TC-6H and TC-7H
- <sup>3</sup>Used on TC-5HV (for spare parts only)
- <sup>4</sup>Used on TC-10H and older TC-6H and TC-7H units
- <sup>5</sup>Used on TC-5HS and other older units (for spare parts only)



Before brewing into this TC container, wash inside to remove any oil, debris or dust. Use a mild solution of dish soap and water. Rinse with running water until all soap residue is removed.

ECN 17496 RevF 07/12/16 @ 15.0

---



**Wilbur Curtis Co., Inc.**

6913 Acco Street, Montebello, CA 90640-5403 U.S.A.

Phone: 800-421-6150 | Fax: 323-837-2410 | Technical Support Phone: 800-995-0417 (M-F 5:30 A.M. - 4:00 P.M. PST) | Email: [techsupport@wilburcurtis.com](mailto:techsupport@wilburcurtis.com) | [www.wilburcurtis.com](http://www.wilburcurtis.com)

**FOR THE LATEST SPECIFICATION INFORMATION GO TO [WWW.WILBURCURTIS.COM](http://WWW.WILBURCURTIS.COM)**

Printed in U.S.A. 07/2016 F-1868 Rev F